

FVISS

FAMILY VIOLENCE INFORMATION SHARING SCHEME

UNDER PART 5A of
the FAMILY VIOLENCE
PROTECTION ACT 2008 VIC

WHY:

For the assessment & management of RISK, to SUPPORT individuals & families experiencing VIOLENCE.

THRESHOLDS

1 SHARING BETWEEN PRESCRIBED ISEs

2 FOR A FAMILY VIOLENCE ASSESSMENT OR PROTECTION PURPOSE

3 FAMILY VIOLENCE RISK RELEVANT INFORMATION

4 CONSENT THRESHOLDS ARE MET

i INFORMATION THAT IS RELEVANT TO ASSESSING & MANAGING FAMILY VIOLENCE RISK, WHICH DIFFERS BASED ON THE PATTERN of COERCIVE CONTROL.

= "SERIOUS THREAT" IS EQUAL TO "SERIOUS RISK" in MARAM

FOR GUIDANCE



USE the GUIDES and YOUR PROFESSIONAL JUDGEMENT

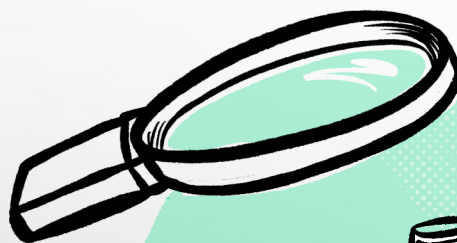
SAFE + EQUAL

No to Violence
Leading the change to end male family violence in Australia

**Centre for Excellence in
Child and Family Welfare**

Safe and Equal, Centre for Excellence in Child and Family Welfare and No To Violence acknowledges the support of the Victorian Government. This is part of a suite, for further information see the Overview of FVISS & CISS.

Illustration by Debbie Wood
Created on Wurrundjeri Country
www.debbiewood.com.au



KEEPING ADULTS USING FAMILY VIOLENCE IN VIEW

